

morphy richards

smart ideas for your home




INSPIRING THE BEST IN YOU

Product Range Catalogue

For the last 16 years, Morphy Richards has made its mark in India with excellence in design & quality, and become the first choice for innumerable households with presence in over 20 categories. Our unique approach to quality, technology and simplicity has made life at home beautifully easy for millions. And of course, with 80 years of presence in UK, Morphy Richards is renowned worldwide for its household appliances - both in terms of latest designs as well as technology.





The brand
most households
in the UK own.

INDEX

FOOD PREPARATION

Mixer Grinders	3
Juicer Mixer Grinders	9
Juicers	11
Food Processors	13
Hand Blender & Mixer	15
Chopper	19

COOKING APPLIANCES

Meal Maker	23
Oven Toaster Grills	25
Microwave Ovens	29
Induction Cookers	33
Electric Cookers	35

BREAKFAST & SNACKING

Pop-up Toasters	39
Sandwich Makers	41

BEVERAGES

Coffee Makers	47
Electric Kettles	49

CLOTHING CARE

Iron	55
------	----

HOME SOLUTIONS

Water Heaters	63
Room Heaters	67

PERSONAL GROOMING

Hair Dryer	73
------------	----

PREMIUM GIFTING RANGE

Premi Range	77
Redefine Range	78
Total Control Range	79



FOOD
PREPARATION



The image shows three shallow, round bowls filled with finely ground spices, arranged on a rustic wooden surface. The bowl in the foreground is filled with a bright yellow-orange powder. Behind it, a larger bowl is filled with a vibrant red-orange powder. In the background, another bowl contains a darker, reddish-brown powder. The lighting is warm and directional, highlighting the texture of the ground spices and the grain of the wood.

Mixer
Grinders

Mixer Grinders

5 year
Motor

30
Months
Warranty

2 year

ICON-DUX



- 750 Watts
- 5-year motor warranty
- Number of jars: 3
 - Liquids jar: 1.5 lit.
 - Dry/soak grinding jar: 1.8 lit.
 - Chutney jar: 1.4 lit.
- Stunning silver metallic finish
- Break-resistant jar handles and drive cap
- 4 hardened stainless steel blades for multiple functions
- 3-speed function control with pulse facility for grinding/blending results as required
- Flow breaker in jar for fast & effective grinding
- Overload protection for motor
- Cord winding factory for easy storage
- Shock-proof insulated body



ICON-SUPREME



- 750 Watts
- 5-year motor warranty
- Number of jars: 4
 - Liquids jar: 1.5 lit.
 - Dry/soak grinding jar: 1.8 lit.
 - Chutney jar: 1.4 lit.
 - Flour jar: 1.5 lit.
- 4 hardened stainless steel blades for multiple functions
- Overload protection for motor
- Cord winding factory for easy storage
- 3-speed function control with pulse facility
- Flow breaker in jar for fast & effective grinding
- Flour jar with flin filter
- Shock-proof insulated body



ICON-CLASSIQUE



- 750 Watts
- 5-year motor warranty
- Number of jars: 3
 - Liquids/blending/whisking jar: 1.5 lit.
 - Dry/soak grinding/blending jar: 1.8 lit.
 - Chutney jar: 1.4 lit.
- Flow breaker in jar for fast & effective grinding
- High-grade stainless steel jars
- 4 hardened stainless steel blades for multiple functions
- Overload protection for motor
- Cord winding factory for easy storage
- 3-speed ergonomic control switch with pulse facility
- Drink and crush (DRC) jar handles
- Popcorn texture jar lid caps for better mixing of cereals or adding liquids during operation
- Shock-proof insulated body



Mixer Grinders

5 year
Motor

30
Months
Warranty

2 year

MARVEL KITCHEN



- 750 Watts
- 5-year motor warranty
- Stainless steel jars and 7 blades for multiple functions
- Number of jars: 4
 - Chutney jar - 0.4 lit.
 - Flour jar - 1.5 lit.
 - Liquidizing jar - 1.5 lit.
 - Dry fruit grinding jar - 1.0 lit.
- 3-speed function control with touch facility
- 600-gram stainless AEG jar handles and polycarbonate lid cap
- Overload protection for motor



PRIMO CLASSIQUE

NEW



- 350 Watts
- 5-year motor warranty
- Number of jars: 3
 - Liquidizing jar - 1.5 lit.
 - Dry fruit jar - 1.0 lit.
 - Chutney jar - 0.4 lit.
- Brush stainless jar handles and inner cap
- 4 hand drilled stainless steel blades for multiple functions
- 3-speed function control with touch facility
- Fine 60 holes in jars for fast & efficient grinding
- Overload protection for motor
- Shock-proof insulated body



ACE PLUS



- 750 Watts
- 5-year motor warranty
- Number of jars: 3
 - Liquidizing jar - 1.5 lit.
 - Dry fruit grinding jar - 1.0 lit.
 - Chutney jar - 0.4 lit.
- High grade stainless steel jar
- 3 hand drilled stainless steel blades for multiple functions
- Overload protection for motor
- 3-speed function control with touch facility
- Ergonomically designed AEG jar handles
- Shock-proof insulated body



Mixer Grinders

**5 year
MOTOR**

**30
LITRE**

2 year

ICON ROYAL – ORCHID

NEW



- 600 Watts
- 5-year motor warranty
- Number of jars: 3
 - Liquating jar: 1.5 lit.
 - Dry/Wet jar: 1.0 lit.
 - Chutney jar: 0.4 lit.
- Break-resistant jar handles and drive cap
- 4 hardened stainless steel blades for multiple functions
- 3-speed function control with touch facility
- Flow breakers in jars for fast & effective grinding
- Overload protection for motor
- Cord winding facility for easy storage
- Shock-proof stainless body



ICON ROYAL – SAPPHIRE

NEW



- 600 Watts
- 5-year motor warranty
- Number of jars: 3
 - Liquating jar: 1.5 lit.
 - Dry/Wet jar: 1.0 lit.
 - Chutney jar: 0.4 lit.
- Break-resistant jar handles and drive cap
- 4 hardened stainless steel blades for multiple functions
- 3-speed function control with touch facility
- Flow breakers in jars for fast & effective grinding
- Overload protection for motor
- Cord winding facility for easy storage
- Shock-proof stainless body



ICON ESSENTIAL



- 600 Watts
- 5-year motor warranty
- Number of jars: 3
 - Liquating/blending/whipping jar: 1.5 lit.
 - Dry/wet grinding jar: 1.0 lit.
 - Chutney jar: 0.4 lit.
- High-grade stainless steel jar
- 4 hardened stainless steel blades for multiple functions
- Overload protection for motor
- Cord winding facility for easy storage
- 3-speed function control with touch facility
- Break-resistant ABS jar handles
- Transparent drive cap and jar lid for viewing and easy operation
- Flow breakers in jars for fast & effective grinding
- Shock-proof stainless body



Mixer Grinders

30
Months
Warranty

CHAMP ESSENTIALS



- 500 Watts
- 5-year motor warranty
- Number of jars: 3
 - Liquidizing jar: 1.2 lit.
 - Dry/wet grinding jar: 0.8 lit.
 - Chutney jar: 0.25 lit.
- High-grade stainless steel jars
- 3 pin direct stainless steel blades for multiple functions
- Overload protection for safety
- 3-speed function with a timer facility
- Flow breakers in jars for fast & effective grinding
- Shock-proof insulated body



AERO PLUS

NEW



- 500 Watts
- 3 high-grade stainless steel jars
- Number of jars: 3
 - Liquidizing jar: 1.5 lit.
 - Dry/wet jar: 1.0 lit.
 - Chutney jar: 0.4 lit.
- 3-speed function control with timer facility
- Overload protection for safety
- Release and ergonomically designed AER jar handles
- Shock-proof insulated body

ELITE ESSENTIAL



- 500 Watts
- High-grade stainless steel jars
- Number of jars: 3
 - Liquidizing jar: 1.5 lit.
 - Dry/wet grinding jar: 1.0 lit.
 - Chutney jar: 0.4 lit.
- 3 pin direct stainless steel blades for multiple functions
- Overload protection for safety
- 3-speed function control with a timer facility for better grinding/blending results as required
- Ergonomically designed AER jar handles
- Flow breakers in jars for fast & effective grinding
- Shock-proof insulated body

Mixer Grinders

30
Watts
Blending



- 300 Watts
- High-grade stainless steel jars
- Number of jars: 3
 - Liquidizing jar - 1.2 ltr.
 - Dry/Wet grinding jar - 1.0 ltr.
 - Chutney jar - 0.3 ltr.
- 3 functional stainless steel blades for multiple functions
- Durable protection for cords
- 3-speed function control with motor lock
- Ergonomically designed Aero jar handles
- Shock proof insulated body



A close-up photograph of a clear glass filled with a vibrant purple-blue smoothie. A single fresh blueberry is perched on the surface of the drink. A black straw is inserted into the glass. The glass sits on a pink, textured placemat. In the background, another similar glass is partially visible. The overall scene is brightly lit, highlighting the texture of the smoothie and the freshness of the ingredients.

Juicer
Mixer
Grinders

Juicer Mixer Grinders

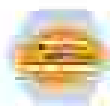
20%
EXTRA JUICE

2 year
WARRANTY

DIVO ESSENTIAL



- 500 Watt
- Number of jars: 3
 - Expanding jar - 1.5 lit.
 - Grinding jar - 1.0 lit.
 - Chutney jar - 0.25 lit.
- 3 hardened stainless steel blades for multiple functions
- 3-speed control and turbo switch for different applications
- Overload protection for safety
- Drive pulp collector for added convenience



DUTIE



- 430 Watt
- Number of jars: 2
 - Expanding jar - 1.5 lit.
 - Dry/wet grinding jar - 0.8 lit.
- 3 hardened stainless steel blades for multiple functions
- Universal grinding blade
- 3-speed turbo control with turbo facility
- Overload protection for safety
- Anti-skip feet





Juicers

Juicers

2 year

VOICE XPRESS



- 700 Watts
- Multiple speed control for both hard and soft fruits
- Extra-large inlet for larger fruits and vegetables
- Stainless steel super mesh filter
- Large 2 lit. pulp container
- All parts are dishwasher safe
- Safety clamp
- Anti-skip lock
- Cord storage facility
- On-line pulp collector for added convenience

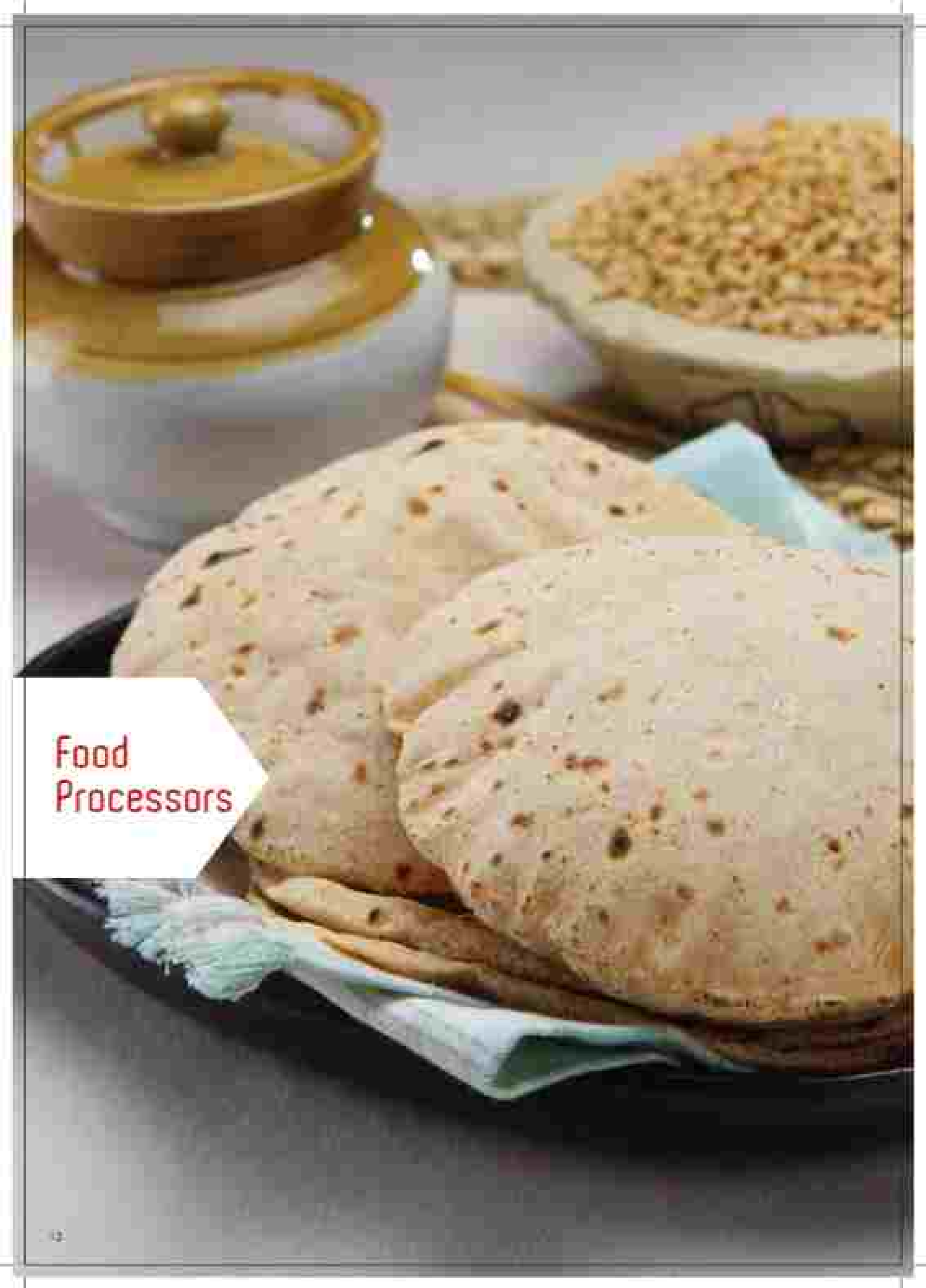


MAXIMO



- 400 Watts
- 2-speed control and motor switch for different applications
- On-line pulp collector for added convenience





Food
Processors

Food Processors



2 year

ICON DIX



- 1100 Watt
- Jar capacity:
 - Liquidizing jar: 1.5 lit.
 - SS 304 square jar for dry/veg grinding: 1 lit.
 - SS 304 jar for chutney/paste/mince grinding: 0.4 lit.
- 2.4 lit. pulse size processing bowl
- 3-year product warranty
- 11 food processing attachments
- Brushed metal, square shaped body
- Full stainless steel disc blades for processing and long life
- Quadra flow technology for super-fine grinding
- Unique safety lock
- Spatula

Accessories: Jar for wet grinding, dry grinding, liquidizing, blending, pureeing, chopping, mixing, mincing, kneading, air-chilling, variable 7-step timing for different thicknesses, citrus juicer, centrifugal juicer, fine grating, coarse shredding, French fries.



ICON SUPERB



- 1000 Watt
- Jar capacity:
 - Liquidizing jar: 1.5 lit.
 - SS 304 square jar for dry/veg grinding: 1 lit.
 - SS 304 jar for chutney/paste/mince grinding: 0.4 lit.
- 2.4 lit. pulse size processing bowl
- 3-year product warranty
- 11 food processing attachments
- Brushed metal, square shaped body
- Full stainless steel disc blades for processing and long life
- Quadra flow technology for super-fine grinding
- Unique safety lock
- Spatula

Accessories: Jar for wet grinding, dry grinding, liquidizing, blending, pureeing, chopping, mixing, mincing, kneading, air-chilling, variable 7-step timing for different thicknesses, citrus juicer, centrifugal juicer, fine grating, coarse shredding, French fries.



ESSENTIAL - 600



- 600 Watt
- Jar capacity:
 - Polycarbonate liquidizing jar: 1.5 lit.
 - Grinding jar: 1 lit.
 - Chutney jar: 0.4 lit.
- 1.5 lit. processing bowl
- Safety cover
- Unique safety lock
- Spatula

Accessories: Stainless steel French fries blade, stainless steel shredder slice-and-shoulder, air kneader, chopper, citrus juicer, centrifugal juicer.



A close-up photograph of a white ceramic bowl filled with a vibrant red soup. A dollop of thick white cream is placed in the center of the bowl, topped with several fresh, bright green basil leaves. The soup is garnished with a sprinkle of black pepper and small yellow seeds. The background is a soft, out-of-focus light brown.

Hand
Blender
& Mixer

Hand Blender & Mixer



2 year

HB0055



- 400 Watts
- 2-speed soft push button
- Variable 5-speed control
- Easy locking system
- Slim ergonomic design
- Comfortable grip for ease of use
- Universal blade for multiple functions
- Detachable stainless steel leg for easy cleaning
- Washable
- Accessories: Chopper, whisk attachment, measuring beaker

HB05



- 400 Watts
- 2-speed soft push button
- Easy locking system
- Comfortable grip for ease of use
- Universal blade for multiple functions
- Detachable stainless steel leg for easy cleaning
- Washable
- DC motor
- Slim ergonomic design
- Accessories: Chopper, measuring beaker

HB0P



- 400 Watts
- 2-speed soft push button
- Comfortable grip for ease of use
- Universal blade for multiple functions
- Detachable stainless steel leg for easy cleaning
- Washable
- DC motor
- Slim ergonomic design
- Accessories: Chopper, measuring beaker

Hand Blender
& Mixer

2 year

PRONTO ULTRA

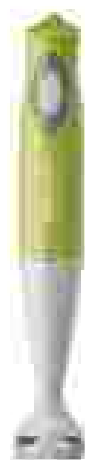
NEW



- 300 Watts
- 1-speed soft push button
- Detachable stainless steel leg for easy cleaning
- Easy locking system
- Multifunction stainless steel blade
- DC motor
- Slim ergonomic design
- Wall fudge

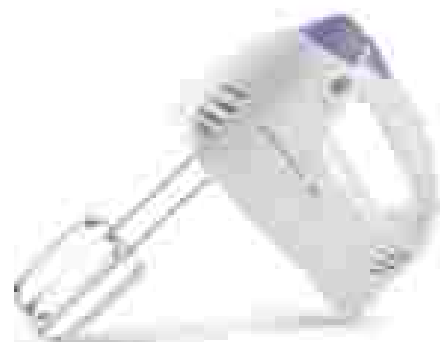
PRONTO SUPER

NEW



- 300 Watts
- 1-speed soft push button
- Detachable plastic leg for easy cleaning
- Easy locking system
- Multifunction stainless steel blade
- DC motor
- Slim ergonomic design
- Wall fudge

HAND MIXER



- 300 Watts
- 5-speed speed
- Easy locking system
- Slim ergonomic design
- Turbo function
- Soft push button
- Accessories: Beater, Whisk





A wooden cutting board is covered with a variety of freshly chopped vegetables. The assortment includes bright orange and red bell pepper pieces, green zucchini slices, and orange carrot chunks. There are also some white vegetable pieces, possibly onions or garlic, scattered throughout. The vegetables are piled together, creating a colorful and appetizing display. The wooden surface of the cutting board is visible at the bottom and right edges of the frame.

Chopper

Chopper

2 year

VVO CHOPPER



- 240 Watts
- Push button with turbo punch function
- Chopping bowl storage bowl
- Stainless steel chopping blade
- Anti-slip base of the chopping bowl serves as a lid for storage
- Additional whisking attachment
- Auto stop-off





COOKING
APPLIANCES



New Category Introduction

Meal
Maker

Meal Maker

2 year
warranty

INDIA'S FIRST MEAL MAKER

NEW



- 1000 Watts
- 1.8 Ltr. capacity
- Industry's first smart function to add Indian flavor
- Simple to use digital interface with LCD illumination
- 5 pre-set cooking functions
- In-built sensory function to remember where a work paused, restart with the same time left
- 45 minutes keep warm function
- Pause function
- Container made for superior cooking performance
- Manual blend to give desired consistency
- Quiet
- Smooth ring to provide precise adjustments on control panel
- Durable 5 layer durable body
- Easy clean non-stick coating
- Chunky soup in 30 mins
- Smooth soup in 25 mins
- Juice/porridge in 15 mins
- Accessories: Recipe book with 40 versatile recipes, spatula

2 year
warranty



SOUP
30 mins



SOUP
25 mins



JUICE
15 mins



SOUP
30 mins

Oven
Toaster
Grillers:



Open
Toaster
Grillers

2 year
warranty

40 RC 55



- 2000 Watts
- 40 lit. capacity
- Multi-level roasting
- Convection
- 0-40 mins. timer
- Thermostatic temperature control function
- Stainless steel outer body
- Metal brush door
- Accessories: Baking tray, crumb tray, wire rack, recipe book



50 RC 55



- 2000 Watts
- 50 lit. capacity
- Multi-level roasting
- Convection
- 0-120 mins. timer
- Thermostatic temperature control function
- Stainless steel outer body
- Metal brush door
- Defrost function
- Easy on function
- Accessories: Baking tray, wire rack, steel-ribbed roasting rack set, roasting tray, recipe book



40 RC 55



- 2000 Watts
- 40 lit. capacity
- Extra-long horizontal roasting (40.5 cm)
- Convection
- 0-90 mins. timer
- Thermostatic temperature control function
- Keep warm function
- Stainless steel outer body
- Easy on function
- Space holder that allows you to enhance the appearance of the dish you are cooking
- Metal brush door
- Accessories: Wire rack, baking tray, crumb tray, space holder, roasting rack set, roasting trays & trays for baking tray, recipe book



Oven
Toaster
Grillers

2 year

RS5



- 1800 Watts
- 20 lit. Capacity
- Motorized rotisserie
- 9-10 preset modes
- Thermostatic temperature control function
- Shiny metal finish
- Accessories: Baking tray, crumb tray, wire rack, rotisserie rod set & rotisserie ring, 4 skewer rods, rings for baking tray, recipe book



24 RS5



- 1500 Watts
- 24 lit. Capacity
- Motorized rotisserie
- 9-10 preset modes
- Stay on function
- Thermostatic temperature control function
- Stainless steel oven body
- Accessories: Baking tray, crumb tray, wire rack, rotisserie ring, rotisserie rod set, rings for baking tray, recipe book



18 RS5



- 1300 Watts
- 18 lit. Capacity
- Motorized rotisserie
- 9-10 preset modes
- Thermostatic temperature control function
- Stainless steel oven body
- Accessories: Baking tray, crumb tray, wire rack, rotisserie ring, rotisserie rod set, rings for baking tray, recipe book



Oven
Toaster
Grillers

2 year

BESTA BLACK SERIES - 52L, 40L, 18L

BESTA BLACK 52



- 2100 Watts
- 52 Lit. Capacity
- 120 mm. inner
- Convection
- Stay on function
- Mounted toaster
- Powder coated steel body
- Illuminated chamber
- Clear glass
- Accessories: Grill wire tray, baking tray, crumb tray, roasting rack, stainless roasting rod set, recipe book



BESTA BLACK 40



- 1800 Watts
- 40 Lit. Capacity
- 120 mm. inner
- Convection
- Stay on function
- Mounted toaster
- Powder coated steel body
- Illuminated chamber
- Clear glass
- Accessories: Grill wire tray, baking tray, crumb tray, roasting rack, stainless roasting rod set, recipe book

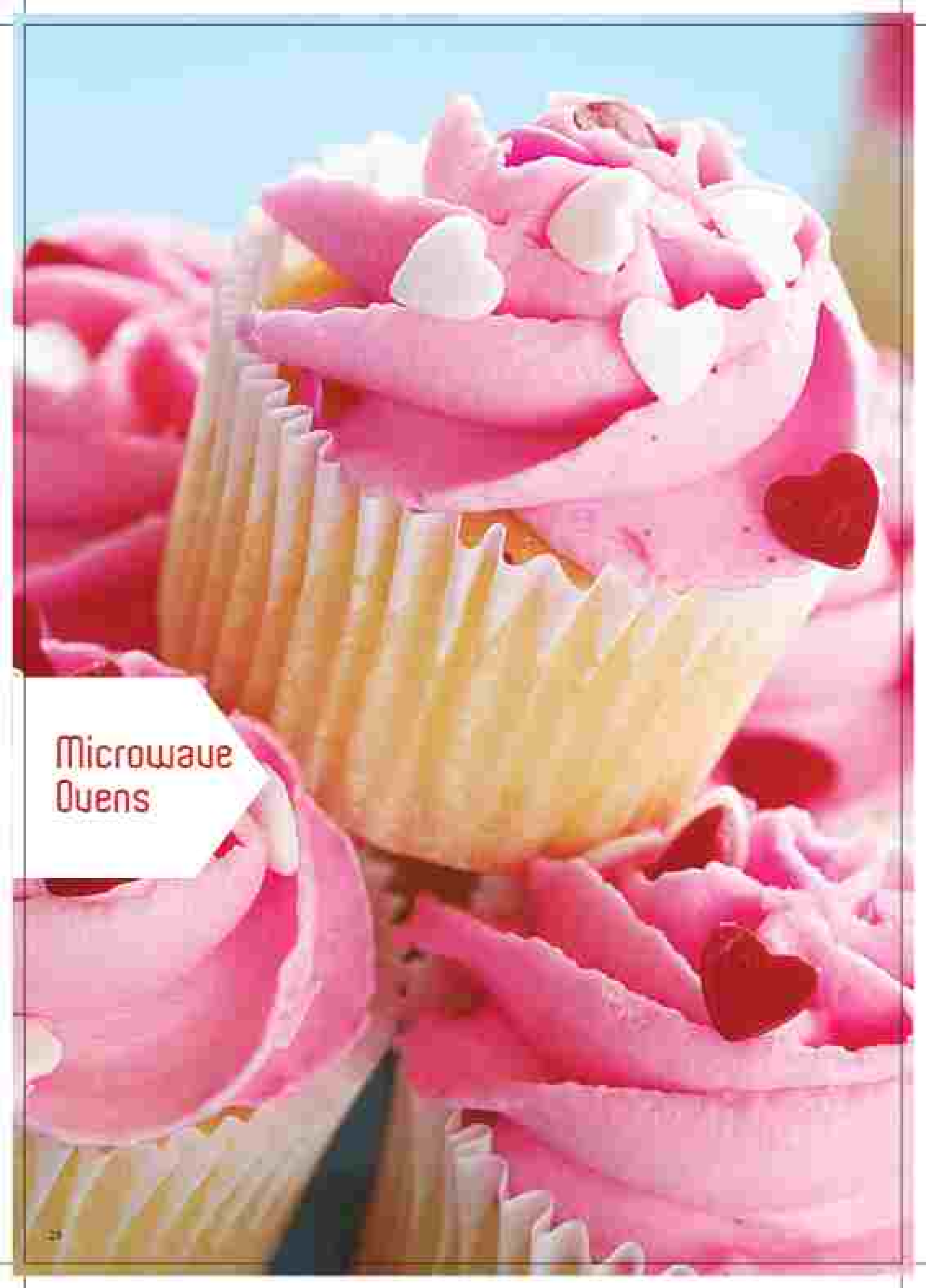


BESTA BLACK 18



- 1400 Watts
- 18 Lit. Capacity
- 60 mm. inner
- Stay on function
- Mounted toaster
- Powder coated steel body
- Clear glass
- Accessories: Grill wire tray, baking tray, crumb tray, roasting rack, stainless roasting rod set, recipe book





Microwave
Ovens

Microwave Queens

2 year

30 MCG8 DYNAX



- 30 lit. capacity
- Convection
- Motorised turntable
- 200 auto cook menus
- Multi-stage cooking
- Speed/weight defrost
- Combination cooking (Convection + Microwave + Grill)
- Stainless steel cavity
- Child lock
- 5 power levels
- Auto reheat
- Accessories: Rotisserie set, wire rack, baking plate, recipe book



MWD 2506 FLORAL

NEW



- 25 lit. capacity
- Convection
- 200 auto cook menus
- Floral design
- Multi-stage cooking
- Combination cooking - 4 settings
- Stainless steel cavity
- Child lock
- 11 power levels
- Speed/weight defrost
- Auto reheat
- Keep Warm
- Sensitivity
- Accessories: Baking tray, wire rack, recipe book



MWD 2506



- 25 lit. capacity
- Convection
- 200 auto cook menus
- Mirror finish door
- Multi-stage cooking
- Combination cooking - 4 settings
- Stainless steel cavity
- Child lock
- 11 power levels
- Speed/weight defrost
- Auto reheat
- Keep Warm
- Sensitivity
- Accessories: Baking tray, wire rack, recipe book



Microwave
Ovens

2 year

Removes
oil and
fat

Delicious
function

27 MCE



- 27 lit. capacity
- Convection
- 10 auto cook menus
- Mirror touch lock
- Combination cooking (Convection + Micro + Grill)
- Stainless steel cavity
- 5 power levels
- Auto defrost
- Accessories: Wire rack, baking plate, / recipe book



20 MBG



- 20 lit. capacity
- Grill
- 8 auto cook menus
- Mirror touch lock
- Multi-stage cooking
- Pre-set function
- Combination cooking (Micro + Grill)
- Powder coated cavity
- 5 power levels
- Accessories: Wire rack



20 MS



- 20 lit. capacity
- Solo
- Convec.
- Powder coated cavity
- 5 power levels
- Timer



Microwave
Queens

2 year

20 MWS

NEW



- 20 liter capacity
- Side
- Powder coated carry
- 2000W
- End cooking signal
- 4 power levels
- Quickstart
- Express cooking
- 20 power levels
- Power lock





Induction
Cookers

Induction Cookers

Overheat and
boil-dry protection

1 year

Auto shut-off

SUPER CHEF 2000W

NEW

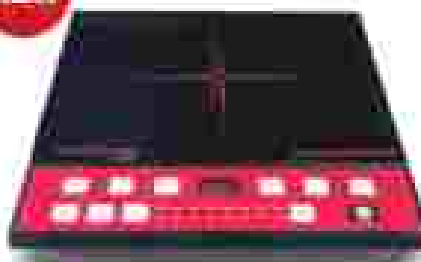


- 2000 Watts
- Preset timer up to 60 mins (auto shut-off)
- 8 power levels
- 8 pre-set modes
- Timer adjustable from 1 min. to 2 hrs.
- Power adjustable from 200 to 2000 W
- Temp. adjustable from 0 to 240 C
- Auto shut-off
- Dry burn protection
- Water panel display with 8 digit cook timer
- 3 hour count function
- Automatic power off when lid gets detected



CHEF ESPERTO 1500W

NEW



- 1500 Watts
- 8 power levels
- 8 pre-set modes
- Timer adjustable from 1 min. to 3 hrs.
- Power adjustable from 200 to 2000 W
- Temp. adjustable from 0 to 240 C
- Auto shut-off
- Dry burn protection
- Preset timer up to 60 mins (auto shut-off)
- Water panel display with 7 digit cook timer
- 3 hour count function
- Automatic power off when lid gets detected



ICON ESSENTIALS 1500W



- 1500 Watts
- 8 power levels
- 7 auto cook buttons
- Electronic cooking timer (1-240 mins)
- 4-digit 7-segment display
- Sensory touch control panel
- Child lock for added safety



CHEF XPRESS 1000



- 1000 Watts
- 7 power levels
- 5 auto cook buttons
- Electronic cooking timer (1-180 mins)
- 4-digit LED display
- Keep warm mode
- Pre-set functions
- Backlit touch pad
- Overheating and sensory protection

A close-up photograph of a traditional copper cooking pot (karahi) filled with fluffy white rice. The rice is garnished with fresh green chutney, sliced green chilies, and fresh mint leaves. The pot is placed on a red textured surface, and a silver spoon is visible in the foreground. The background is a blurred red fabric.

Electric
Cookers

Electric Cookers

2 year

STEAMER COOK



- 700 Watts
- 1.8 lit. Capacity
- Stainless
- Adjusted cooking bowl
- Glass lid
- Cool touch
- Detachable cord
- Safety- includes appliance locking
- Accessories- Steamer basket, Spatula, Heating lid



COOK+



- 700 Watts
- 1.8 lit. Capacity
- Stainless
- Stainless steel lid
- Cool touch
- Detachable cord
- Safety- includes appliance locking
- Adjusted aluminum bowl
- Accessories- Extra pot, Spoon rest, spatula, heating lid



BISTRO (M)



- 350 Watts
- 1.5 lit. Capacity
- Stainless
- Adjusted cooking bowl
- Stainless steel lid
- Cool touch
- Detachable cord
- Safety- includes appliance locking
- Accessories- Spatula, heating lid

D55W



- 350 Watts
- 1.5 lit. Capacity
- Cook and keep warm function
- Stainless steel lid
- Heating pot
- Detachable cord
- Accessories- Spatula, heating lid



**BREAKFAST
& SNACKING**



A stack of five golden-brown pop-up toasters is presented on a white plate. The toasters are stacked vertically, with the top one slightly offset. A pat of butter is melting on the top toaster, and a slice of ham is tucked behind it. Several fresh raspberries are scattered around the stack. The background is softly blurred, showing a fork and knife on a white tablecloth.

Pop-up
Toasters

Pop-up Toasters

REMOVABLE
CRUMB
TRAY

2 year

AT 407 - 4 SLICE



- 1400 Watts
- Cool touch body
- Hi-lift facility for removing smaller slices of bread
- Electronic variable browning control
- Automatic cancel feature
- Cord wrap and storage
- Removable crumb tray for easy cleaning
- Wide slot for big size bread
- Bread crumbing flaps for even toasting on both sides
- Automatic pop-up
- Anti-slag feet



AT 204 - 2 SLICE



- 1000 Watts
- Cool touch body
- Hi-lift facility for removing smaller slices of bread
- Electronic variable browning control
- Cord wrap and storage facility
- Removable crumb tray for easy cleaning
- Wide slot for big size bread
- Automatic pop-up
- Anti-slag feet



AT 202 - 2 SLICE



- 1000 Watts
- Cool touch body
- Hi-lift facility for removing smaller slices of bread
- Electronic variable browning control
- Cancel function
- Cord wrap and storage
- Removable crumb tray for easy cleaning
- Wide slot for big size bread
- Automatic pop-up
- Anti-slag feet



AT 201 - 2 SLICE



- 1000 Watts
- Cool touch body
- Hi-lift feature for removing smaller slices of bread
- Electronic variable browning control
- Cancel function
- Wide slot for larger size of bread
- Automatic pop-up
- Anti-slag feet

A close-up photograph of three grilled sandwiches on a wooden cutting board. The sandwiches are made with round, golden-brown bread that has distinct grill marks. They are filled with melted yellow cheese, sliced red tomatoes, and fresh green basil leaves. In the foreground, there are several fresh ingredients: a sprig of basil, a few raspberries, and some blueberries scattered on a light-colored wooden surface. The background is softly blurred, showing more of the wooden board and a red tomato.

Sandwich
Makers

Sandwich Makers

Compact Upright Storage

Easy to Clean Non-stick Plates

2 year

NEW TOAST & GRILL



- 700 Watts
- Interchangeable toast and grill plates
- Non-stick plates for low oil consumption and easy cleaning
- Power on/redn indicator
- Easy hinged locking
- Oil drainage for removal of excess oil
- Compact upright storage
- Comfortable free handle for carrying
- Anti-skip feet



SM 3006 (TOAST, WAFFLE & GRILL)



- 750 Watts
- Interchangeable toast, waffle and grill plates
- Non-stick plates for low oil consumption and easy cleaning
- Power on/redn indicator
- Easy hinged locking
- Compact upright storage
- Comfortable free handle for carrying
- Anti-skip feet



SM 3006 (TOAST & GRILL)



- 750 Watts
- Interchangeable toast and grill plates
- Non-stick plates for low oil consumption and easy cleaning
- Power on/redn indicator
- Easy hinged locking
- Compact upright storage
- Comfortable free handle for carrying
- Anti-skip feet



SM 3006 (TOAST)



- 750 Watts
- Four plates
- Non-stick plates for low oil consumption and easy cleaning
- Power on/redn indicator
- Easy hinged locking
- Compact upright storage
- Comfortable free handle for carrying
- Anti-skip feet



Sandwich Makers

Compact Upright Storage

Easy to clean Non-Stick Plates

2 year

SM 2006 (TOAST)



- 750 Watts
- Grill plates
- Non-stick plates for low oil consumption and easy cleaning
- Power on lock indicator
- Easy hinged locking
- Compact upright storage
- Constructed from durable fire carrying
- Anti-skid feet



SM 2007 (TOAST)



- 750 Watts
- Grill plates
- Non-stick plates for low oil consumption and easy cleaning
- Power on lock indicator
- Easy hinged locking
- Compact upright storage
- Constructed from durable fire carrying
- Anti-skid feet

SM 2007 (TOAST)



- 750 Watts
- Grill plates
- Non-stick plates for low oil consumption and easy cleaning
- Power on lock indicator
- Easy hinged locking
- Compact upright storage
- Constructed from durable fire carrying
- Anti-skid feet





BEVERAGES



A tall, clear glass filled with a dark coffee beverage, topped with a thick, white layer of foam. The foam is dusted with a fine, brown powder, likely cocoa or chocolate shavings. The glass sits on a white saucer, which has two white sugar cubes placed on it. In the background, a blurred coffee machine and a plate of pastries are visible.

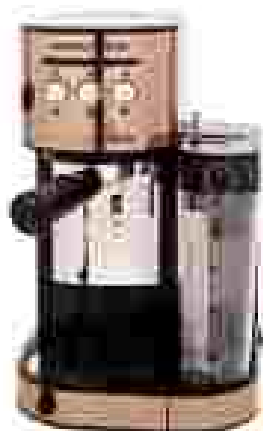
Coffee
Makers

Coffee Makers

2 year

KAFFEITO

NEW



- Power: 230 V/250 Watts
- 3-in-1 Coffee maker. One touch button for single or double espresso, Cappuccino and milk
- 15 bar pump for pressure for rich taste of coffee
- Water tank capacity: 1.2 lit.
- Milk tank capacity: 0.7 lit.
- One touch operation for brewing coffee with froth of small cup machine and big cup machine
- Flowmeter technology for right amount of coffee
- Temperature control technology
- Dish washer safe
- Detachable milk tank and water tank
- Storage for funnel and filter
- Milk frother
- Accessories: Coffee scoop, single shot coffee filter and double shot coffee filter

NEW EUROPA ESPRESSO/CAPPUCCINO



- 800 Watts
- 4-cup capacity
- Unique: easy to clean, removable drip tray
- Turbo-cappuccino handle for effective frothing
- Steam and coffee strength selector
- Steam control knob
- Stainless steel 2-cup filter
- Five-positions dial
- LCD illuminated multi switch

FRESCO



- 800 Watts
- 4-cup capacity
- Glass carafe
- Temperature indicator dial
- Removable drip tray
- Milk frothing nozzle
- Overheat protection
- Stainless steel 2-cup filter

PRIMERO DRIP

NEW



- 750 Watts
- 720 ml Coffee maker
- Anti-drip function for hassle-free drink
- Waiting plain keeps coffee for auto-keep
- Removable filter for convenient cleaning of filter and filter holder
- Water level indicator
- Power on switch - illuminated switch on
- Accessories: Glass Carafe 720 ml with lid, scoop, milk frother, spoon

A close-up photograph of a glass kettle pouring water into a glass cup. The water is captured mid-pour, creating a dynamic splash in the cup. The cup is partially filled with water and sits on a light-colored, textured placemat. In the foreground, several cinnamon sticks are scattered on the placemat. The background is a soft, out-of-focus green, suggesting an outdoor setting. A red arrow-shaped graphic points from the text towards the kettle.

Electric
Kettles

Electric Kettles

2 year

INSTACOOK 1.0 Lit.



- 1300 Watts
- 1.0 lit. capacity
- Auto cut-off and dry hot protection
- Concave heating element
- 360° cordless connector base
- Keep warm function
- Variable temperature control knob
- Removable glass lid
- Cord storage facility
- Neon power on indicator
- Soft thermostat handle
- 8 functions (boiled, sports, tea/coffee, soup, steril, hot, retaining, keep warm, etc)
- Cool touch handle
- Accessories: Steaming with rack, steaming basket, tea/coffee ball



RAPIDO 1.5 Lit.



- 2200 Watts
- 1.5 lit. Capacity
- Auto cut-off and dry hot protection
- Rapid boil
- 360° cordless connector base
- 304 grade stainless steel body
- Clear view water level indicator
- Splash filter
- Concave element for easy cleaning and to prevent scaling
- Neon power on indicator
- Cool touch handle and lid

FLURO 1.7 Lit.

NEW



- 2000 Watts
- 1.7 lit. capacity
- Concave element for easy cleaning and to prevent scaling
- 360° cordless spinarm
- Cool thermostat handle
- ABS thermal housing
- Auto shut-off and dry hot protection
- Splash filter
- High-end thermostat ensuring no contact with the Solty
- Clear view water level indicator
- A single soft button press for a prompt opening of lid
- Extra safety device is cut-off when the kettle is opened without warm
- Cool touch handle for safe handling



Electric
Kettles

2 year

FLAMJO 1.7 Ltr

NEW



- 2000 Watts
- 1.7 lit. Capacity
- Metallic red finish
- Chromised interior for easy cleaning and to prevent scaling
- 360° cordless spin wire
- Auto thermostat inside
- Auto shut-off and dry boil protection
- Soft-hand thermostat ensuring to keep warm on safety
- Water level indicator
- Detachable spout filter to prevent filtered water
- Extra safety switch enables to cut-off when the kettle is opened without water
- Cool touch handle for safe handling
- Cord wraps at the base



TEA MAKER 1.5 Ltr



- Brewing: 1850 Watts, Brewing: 200 Watts
- 1.5 lit. Capacity
- Auto shut-off and dry boiling protection
- Chromised interior for easy cleaning and to prevent scaling
- 360° cordless connector base
- Stylish and durable stainless steel body
- Separate functions for boiling and brewing
- Soft thermostat inside
- Cool touch handle and lid



IMPRESSO 1.0 Ltr



- 1100 Watts
- 1 lit. Capacity
- Auto cut-off and dry boil protection
- Chromised interior for easy cleaning and to prevent scaling
- Easy on disc spin wire
- 316 grade stainless steel body
- Cord storage facility
- 1000 years on indicator
- Water level indicator
- On is thermostat inside
- Cool touch handle and lid



Electric Kettles

2 year

VOYAGER 100 - 0.5 Lit.



- 1000 Watts
- 0.5 lit. capacity
- Auto shut-off feature
- Coated interior for easy cleaning and to prevent scaling
- 304 grade stainless steel body
- High power on indicator
- Spout for easy fill
- Automatic shut-off in case of power fluctuation
- Safe thermal insulate
- Cool touch handle and lid



VOYAGER 200 - 0.5 Lit.



- 1800 Watts
- 0.5 lit. capacity
- Auto shut-off feature
- Coated interior for easy cleaning and to prevent scaling
- 304 grade stainless steel body
- High power on indicator
- Automatic shut-off in case of power fluctuation
- Safe thermal insulate
- Cool touch handle and lid



VOYAGER 100 - 0.5 Lit.



- 1000 Watts
- 0.5 lit. capacity
- Coated interior for easy cleaning and to prevent scaling
- High power on indicator
- Cool touch handle and lid
- Spout for easy fill
- Automatic shut-off in case of power fluctuation
- Safe thermal insulate
- Cool touch body





GARMENT CARE







Irons

Steam
Irons

2 year
warranty

SUPER GLIDE STEAM IRON



- 2000 Watts
- Ceramic coated soleplate for strong and smooth ironing
- Extra-large steamplate in its class for faster ironing
- Large 150ml water tank
- Variable steam control
- 11 gms. of continuous steam
- Powerful steam shots: 100 gms./min.
- Self-cleaning with anti-calc function
- Vertical ironing
- Extra-long 360° swivel cord for easy independence
- Fast water spray to remove difficult stains
- 40 steam lines for uniform steam release
- CE approved safety standards



ULTRA GLIDE STEAM IRON

NEW



- 1800 Watts
- Crystal ultra cloud soleplate for immediate glide over the fabric
- Extra-large steamplate in its class for faster ironing
- Large 150ml clear view water tank
- Variable steam control
- 14-19 gms./min. approx. regular steam output for easy pressing and superior results
- Powerful steam shots - 8 to 10 gms./min. 0.4 to 0.5gms./burst
- Self-cleaning function to flush out any deposits near the wires, to avoid more clogging and provide high efficiency
- Vertical ironing and steaming feature
- Long 360° swivel cord for easy independence
- 71 steam lines
- Rubber grip on handle, thermostat knob, on convenient folding
- Cover flap on water tank to avoid water spillage during ironing
- CE approved safety standards



GLIDE STEAM IRON



- 1200 Watts
- Non-stick coated soleplate for smooth ironing
- Extra-large steamplate in its class for faster ironing
- Large 300ml water tank
- Variable steam control to suit all fabrics
- 11 gms. of continuous steam
- Powerful steam shots: 100 gms./min.
- Self-cleaning function
- Vertical ironing
- Long 360° swivel cord for easy independence
- Fast water spray to remove difficult stains
- 19 steam lines
- CE approved safety standards



Steam
Irons

2 year

PRUDENT SUPER STEAM IRON

NEW



- 1800 Watt
- Non-stick soleplate for smooth ironing
- 400 ml water tank
- Variable steam control to suit all fabrics
- Steam Burst: Minimum 14 g/min
- Vertical ironing
- Anti-calc and self-cleaning function
- Anti-drip function
- Four steam spray to remove difficult creases
- 17 steam holes
- Turbo boost to help get rid of tough creases
- ISI approved safety standards



PRUDENT PRIME STEAM IRON

NEW



- 1800 Watt
- Non-stick soleplate for smooth ironing
- 300 ml water tank
- Variable steam control to suit all fabrics
- Steam Burst: Minimum 14 g/min
- Vertical ironing
- Anti-calc and self-cleaning function
- Long 360° travel cord for easy movement
- Four steam spray to remove difficult creases
- 21 steam holes
- Turbo boost to help efficient clearing of tough creases
- ISI approved safety standards



PRUDENT STEAM IRON

NEW



- 1800 Watt
- Non-stick soleplate for smooth ironing
- 120 ml water tank
- Variable steam control to suit all fabrics
- Self-cleaning
- Steam Burst: Minimum 9 g/min
- Vertical ironing
- Long 360° travel cord for easy movement
- Four steam spray to remove difficult creases
- 15 steam holes
- Turbo boost to help get rid of tough creases
- ISI approved safety standards



Dry
Irons

2 year

MARIEE



- 1000 Watts
- Unique wood finish, designer handle
- Non-stick and extra steam soleplate
- Temperature control
- Steam indicator
- Smart cord



DESIRA



- 1000 Watts
- Super steam handle, sliding lock
- Solopium coating - double million ceramic coating
- Biggest soleplate in its class with surface area of 18440 sq. cm.
- 300° smart cord
- Adjustable thermostat control
- Easy clean ceramic
- Steam indicator



INSPIRA



- 1000 Watts
- Diagonal non-stick coated soleplate
- Adjustable thermostat control
- 300° smart cord
- Steam indicator

Dry
Irons

2 year

SENORA



- 1000 Watt
- Steam non-stick coated soleplate
- Adjustable thermostat control
- 300° steam cord
- Dial iron storage

DAISY



- 1000 Watt
- Flat-iron design
- Plastic body
- American flat-iron non-stick coated soleplate
- Temperature control
- Non-Indicator
- Swivel cord





HOME
SOLUTIONS



A serene spa-themed still life. In the foreground, a stack of five smooth, dark grey stones is balanced on a woven mat. To the left, a lit candle in a glass holder casts a warm glow. A soft, textured towel is draped over the mat. Several small pink flowers are scattered around the stones. The entire scene is reflected in a pool of water in the foreground, creating a shimmering, colorful effect. The background is a soft, out-of-focus green and blue, suggesting an outdoor setting.

Water
Heaters

Water Heaters

2 year

STORAGE WATER HEATERS

SALVO



- 2000 Watts
- Storage water heater
- Superior glass-lined tank
- Maximum water hot
- Energy saving PUF
- Glass-lined heating heating element
- Analog temperature display
- 8 bar pressure - suitable for high-rise buildings
- Requested engineer's place, body
- Free installation to Salvo range
- Free installation types with Salvo 10 ltr., 15 ltr., 25 ltr.
- 7-year warranty on inner tank
- 4-year warranty on heating element
- 2-year warranty on product
- Free installation

Available in 6 ltr., 10 ltr., 15 ltr., 25 ltr.



LAVO



- 2000 Watts
- 6 ltr. Capacity
- Storage water heater
- Superior glass-lined tank
- Digital temperature display
- All Weather Heat, anticorrosion material
- Maximum water hot
- Energy saving PUF
- Glass-lined incoloy 800 heating element
- 8 bar pressure - suitable for high-rise buildings
- 7-year warranty on water tank
- 4-year warranty on inner tank
- 2-year warranty on product
- Free installation types with Lavo 10 ltr., 15 ltr., 25 ltr.
- Free installation

Available in 6 ltr., 10 ltr., 15 ltr., 25 ltr.



Water Heaters

2 year



LAYO DSEI



- 2000 Watts
- Storage Warm Water
- Cold-Free Filter
- Digital Temperature Display
- Temperature and flow setting features with remote control
- Superior quiet-Drum tank
- Magnesium anode rod
- Energy saving PCB
- Class-I and safety 800Hz using electronic
- 8 bar pressure - suitable for high-rise buildings
- 7-year warranty on water tank
- 4-year warranty on heating element
- Free installation

Available in 15 ltr., 25 ltr.



INSTANT WATER HEATER

QUENTE



- 3000/4000 Watts
- Instant Warm Water
- Super hot heating element for longer life and durability
- Polycrystal plastic body
- Stylish look
- Chrome door
- 4.5 bar pressure - suitable for high-rise buildings
- 3-LED lights for power on and heating
- 5-year warranty on water tank
- 3-year warranty on heating element
- 2-year warranty on product
- Free from the survey

Available in 1 ltr. and 3 ltr.







Room
Heaters

Room Heaters

2 year

QFR 13F



- 2500 Watts (2500 W + 400 W PTC fan heater)
- 13 fins
- Adjustable thermostat to maintain desired room temperature
- Automatic PTC fan heater
- Cool window
- Castor wheels with covering plate for easy mobility
- Tip over switch
- Easy Carry handle
- Power protection mode



QFR 11F



- 2500 Watts (2500 W + 400 W PTC fan heater)
- 11 fins
- Adjustable thermostat to maintain desired room temperature
- Cool window
- Castor wheels for easy mobility
- Tip over switch
- Easy Carry handle
- Power protection mode



QFR 9F



- 2500 Watts (2500 W + 400 W PTC fan heater)
- 9 fins
- Adjustable thermostat to maintain desired room temperature
- Automatic PTC fan heater
- Cool window
- Castor wheels with covering plate for easy mobility
- Tip over switch
- Easy Carry handle
- Power protection mode



Room Heaters

2 year

OFFER



- 2000 Watts
- 9 Fans
- Back cover and handles
- Ergonomically designed switch for easy operation
- Adjustable thermostat to maintain desired room temperature
- Cool window
- Cover wheels with retaining plate for easy mobility
- On over switch
- Easy carry handle

PTC HEATER - ARISTO



- 2000 Watts
- Power selection knob sets power as required
- Temperature control knob to set the temperature as required based on winter condition
- Indicator light for ease of operation

PTC HEATER - ORBIT



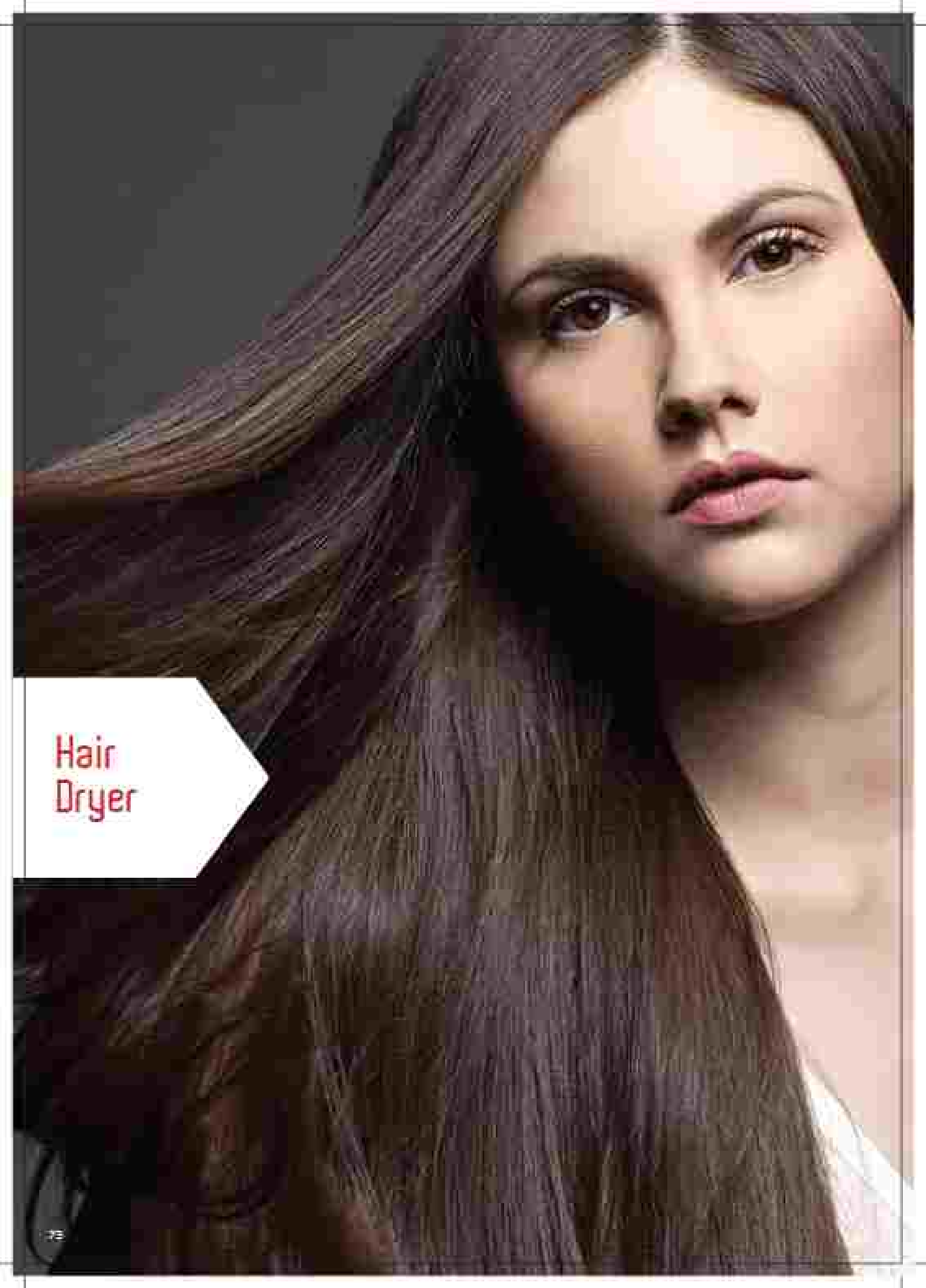
- 2000 Watts
- Power selection knob to set power as required
- Temperature control knob to set the temperature as required based on winter condition
- Indicator light for ease of operation





PERSONAL
GROOMING





Hair
Dryer

Hair Dryer

2 year

HD 17500



- 1200 Watts
- 2-speed setting
- Cold guard with hanging loop
- Flexible conical handle
- Overheat safety cut-off
- Concentrator and diffuser for better air flow
- Dual voltage setting for travel

HD 17500C

NEW



- 1750 Watts
- Proton professional concentrator
- DC motor
- 3-level flexible heat setting
- Flexible handle
- 1 concentrator air flow
- Overheat protection system
- Heavy cord holder for avoiding tangling of hair
- Air Dry Factor





PREMIUM
GIFTING
RANGE



Prism Range



- 2200 Watts
- 1.5 lit.
- Thermal and protected switch
- On/Off switch
- 360° base for left and right handed users
- Water level indicator
- Ring seal
- Automatic shut-off in case of power fluctuations
- Anti-SKID feet
- Cord storage
- Removable fine-scale filter
- Whistle on boil

Available in different colors:



Orange

Yellow

White

Black



PRISM TOASTER



- 1000 Watts
- Thermal and protected switch
- Defrost and Frozen function
- Hi-Rise function
- Anti-SKID feet
- Cord storage
- Removable crumb tray
- Variable browning control
- Cancel, Retest, Freeze functions

Available in different colors:



Orange

Yellow

White

Black



Redefine Range

REDEFINE KETTLE



- 2200 Watts
- 1.5 lit.
- Brushed chrome rim and "Dura-Schirm™" glass body
- Color: Black
- On/off switch
- Ring pop
- Automatic shut-off in case of power fluctuation
- Limescale filter
- Cold storage
- Integrated spout



REDEFINE TOASTER



- 2000 Watts
- Stainless steel with mixed THERMOGLASS™ body
- Color: Black with chrome details
- Retract and Freeze function
- THERMOGLASS™ technology
- See to hot toastig evenly
- Automatic rise and fall bread carriage
- Illuminated on/off button
- Solid construction
- Digital browning control
- Defrost and Reheat function
- No-SLAG (ES)
- Accessories: Glass cleaning sprays



Total
Control
Range

STAND MIXER PRO



- 800 Watts
- 5 lit., stainless steel mixing bowl
- 6 speeds
- Lock setting mode
- Smart Response Technology
- 6 auto mixing programmes
- Pulse function
- Accessories: whisk, dough hook, mixing beater, splash guard

Available in White & Red

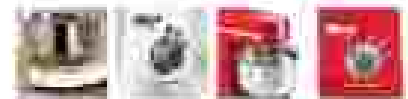


TABLE BLENDER



- 600 Watts
- 1.75Litre BPA-free jar
- 1.5lit. working jar capacity
- 5 speeds
- Lock setting mode
- Smart Response Technology
- 4 pre-set programmes: soups/liquids, smoothies, soup and hot drink
- Variable speed control
- Large and specifically angled powerful blades
- 2 speeds: On and Rest
- Unique cord storage
- Accessories: Measuring cup



HAND MIXER



- 300 Watts
- 5 speeds
- Lock setting mode
- Speed lock
- Variable speed control
- Pulse function
- Compact cable storage
- Precision control switch
- Unique cord storage
- Accessories: kneading blades, cake beater, whisk



Total
Control
Range

HAND BLENDER



- 650 Watts
- 9+ Turbo speed
- DC motor
- Slow start
- Precision control trigger
- Anti-splash technology
- Speed limiter/brake
- Ceramic blade
- Accessories: Standard 1000 ml, 0.5 ltr. blending/storage tank



HAND BLENDER PRO SET



- 650 Watts
- 9+ Turbo speed
- DC motor
- Slow start
- Precision control trigger
- Anti-splash technology
- Speed limiter/brake
- Ceramic blade
- Accessories: Standard 1000 ml, 0.5 ltr. blending/storage tank, blending/storage tank, 0.4 ltr. smoothie jar (2 Qty) with a lid, 0.5 ltr. jar with 1.5 ltr. storage lid



HAND BLENDER PREP SET



- 650 Watts
- 9+ Turbo speed
- DC motor
- Slow start
- Precision control trigger
- Anti-splash technology
- Speed limiter/brake
- Ceramic blade
- Accessories: Standard 1000 ml, 0.5 ltr. blending/storage tank, 0.4 ltr. smoothie jar (2 Qty) with a lid, 0.5 ltr. jar with 1.5 ltr. storage lid



Total
Control
Range

HAND BLENDER WORKCENTRE



- 450 Watts
- 6+ Turbo speed
- DC motor
- Slow start
- Precision control dials
- Anti-splash technology
- Speed combination
- Stainless blade
- Accessories: Stainless steel jug, 1.25 qt. WorkCentre, blending jar, 2 chopping discs/blades
(Disc 1: Thin slice, fine grate)
(Disc 2: Thick slice, coarse grate)





morphy richards

smart Ideas for your Home

Customer Care

1-800-452-0000

273 Service Centers

LOCATIONS

Atlanta, GA
Austin, TX
Baltimore, MD
Boston, MA
Buffalo, NY
Cincinnati, OH
Cleveland, OH
Dallas, TX
Denver, CO
Detroit, MI
Houston, TX
Indianapolis, IN
Jacksonville, FL
Kansas City, MO
Las Vegas, NV
Los Angeles, CA
Miami, FL
Minneapolis, MN
New York, NY
Newark, NJ
Newport News, VA
Oklahoma City, OK
Omaha, NE
Orlando, FL
Philadelphia, PA
Phoenix, AZ
Portland, ME
Portland, OR
Raleigh, NC
San Antonio, TX
San Diego, CA
Seattle, WA
Tampa, FL
Tucson, AZ
Wichita, KS

Albuquerque, NM
Anchorage, AK
Arlington, VA
Asheville, NC
Bakersfield, CA
Birmingham, AL
Boise, ID
Butte, MT
Chattanooga, TN
Chicago, IL
Columbus, GA
Columbus, OH
Dayton, OH
Daytona Beach, FL
Des Moines, IA
Detroit, MI
Durham, NC
El Paso, TX
Evansville, IN
Fort Worth, TX
Fresno, CA
Fullerton, CA
Hartford, CT
Hickory, NC
Honolulu, HI
Houston, TX
Indianapolis, IN
Jacksonville, FL
Kansas City, MO
Las Vegas, NV
Los Angeles, CA
Miami, FL
Minneapolis, MN
New York, NY
Newark, NJ
Newport News, VA
Oklahoma City, OK
Omaha, NE
Orlando, FL
Philadelphia, PA
Phoenix, AZ
Portland, ME
Portland, OR
Raleigh, NC
San Antonio, TX
San Diego, CA
Seattle, WA
Tampa, FL
Tucson, AZ
Wichita, KS

Albuquerque, NM
Anchorage, AK
Arlington, VA
Asheville, NC
Bakersfield, CA
Birmingham, AL
Boise, ID
Butte, MT
Chattanooga, TN
Chicago, IL
Columbus, GA
Columbus, OH
Dayton, OH
Daytona Beach, FL
Des Moines, IA
Detroit, MI
Durham, NC
El Paso, TX
Evansville, IN
Fort Worth, TX
Fresno, CA
Fullerton, CA
Hartford, CT
Hickory, NC
Honolulu, HI
Houston, TX
Indianapolis, IN
Jacksonville, FL
Kansas City, MO
Las Vegas, NV
Los Angeles, CA
Miami, FL
Minneapolis, MN
New York, NY
Newark, NJ
Newport News, VA
Oklahoma City, OK
Omaha, NE
Orlando, FL
Philadelphia, PA
Phoenix, AZ
Portland, ME
Portland, OR
Raleigh, NC
San Antonio, TX
San Diego, CA
Seattle, WA
Tampa, FL
Tucson, AZ
Wichita, KS

Albuquerque, NM
Anchorage, AK
Arlington, VA
Asheville, NC
Bakersfield, CA
Birmingham, AL
Boise, ID
Butte, MT
Chattanooga, TN
Chicago, IL
Columbus, GA
Columbus, OH
Dayton, OH
Daytona Beach, FL
Des Moines, IA
Detroit, MI
Durham, NC
El Paso, TX
Evansville, IN
Fort Worth, TX
Fresno, CA
Fullerton, CA
Hartford, CT
Hickory, NC
Honolulu, HI
Houston, TX
Indianapolis, IN
Jacksonville, FL
Kansas City, MO
Las Vegas, NV
Los Angeles, CA
Miami, FL
Minneapolis, MN
New York, NY
Newark, NJ
Newport News, VA
Oklahoma City, OK
Omaha, NE
Orlando, FL
Philadelphia, PA
Phoenix, AZ
Portland, ME
Portland, OR
Raleigh, NC
San Antonio, TX
San Diego, CA
Seattle, WA
Tampa, FL
Tucson, AZ
Wichita, KS

Albuquerque, NM
Anchorage, AK
Arlington, VA
Asheville, NC
Bakersfield, CA
Birmingham, AL
Boise, ID
Butte, MT
Chattanooga, TN
Chicago, IL
Columbus, GA
Columbus, OH
Dayton, OH
Daytona Beach, FL
Des Moines, IA
Detroit, MI
Durham, NC
El Paso, TX
Evansville, IN
Fort Worth, TX
Fresno, CA
Fullerton, CA
Hartford, CT
Hickory, NC
Honolulu, HI
Houston, TX
Indianapolis, IN
Jacksonville, FL
Kansas City, MO
Las Vegas, NV
Los Angeles, CA
Miami, FL
Minneapolis, MN
New York, NY
Newark, NJ
Newport News, VA
Oklahoma City, OK
Omaha, NE
Orlando, FL
Philadelphia, PA
Phoenix, AZ
Portland, ME
Portland, OR
Raleigh, NC
San Antonio, TX
San Diego, CA
Seattle, WA
Tampa, FL
Tucson, AZ
Wichita, KS

BRANCH OFFICES

- AHMEDABAD** : 105, 1st Floor, Sakar III, Off Ashram Road, Narangpura, Ahmedabad-380 014.
Tel: 079-27943964, 27943967, 27943967 Fax: 079-27943966
- BENGALURU** : Bopal Bhawan, No. 18, Residency Road, Bangalore-560 025.
Tel: 080-22235488, 22235884, 22273305 Fax: 080-22214878
- BHUBANESHWAR** : Khamesha Nagar, Gurudhara Building, Jajpath, Bhubaneswar-751 001.
Tel: 0674-2390527, 2390555, 2394052 Fax: 0674-2390294
- CHANDIGARH** : Eastern Business Towers, Block A, Unit No. 202 Sector-88, Mohali, Punjab
- CHENNAI** : Navina Preadium, 8th floor, A-Block No. 103, Nelson Manickavel Road, Arinjilankal, Chennai-600 029. Tel: 044-30552200 Fax: 044-42163300
- COCHIN** : 48/1107, CRL House, Tala Oil Mills Road, Ernakulam, Cochin-682 018.
Tel: 0484-2291119, 2291128, 2292030 Fax: 0484-2291744
- DELHI** : 1,10, Ashraf Ali Road, New Delhi-110 002. Tel: 011-4296400, Fax: 011-23300214
- GUWAHATI** : Aganai House, Omrahar Basti, G.S. Road, Guwahati-781 005.
Tel: 0361-2345497, 2345498, 2345499 Fax: 0361-2345495
- HYDERABAD** : H. No. 5-9-1090/2, 3rd Floor, Vitthal Das Chambers, Rajahmundry Road, Somaj Guda, Hyderabad-500 082. Tel: 040-26442932, 26442933, 26442934 Fax: 040-26302745
- INDORE** : Commerce House, 3rd Floor, 7 Race Course Road, Indore-452 003.
Tel: 0731-2548908, 2548910, 2548912 Fax: 0731-2548911
- JAIPUR** : Panchajanya Nivas, M. I. Road, Jaipur-302 001.
Tel: 0141-2377364, 2369541, 2369542 Fax: 0141-2374061
- KOLKATA** : 6/1, Lalbazar Street, 3rd Floor, Bilwani Building, Kolkata-700001.
Tel: 033-22822668
- LUCKNOW** : Shalini Corporate Park, Titanium Building, No. 208-210, 2nd floor, Vishul Khand, Gomti Nagar, Lucknow-226 010. Tel: 0522-4932900
- MUMBAI** : 45/45, Veeh Nandan Road, Mumbai-400 001. Tel: (+91) 22040760 Fax: (+91) 22881379
- NAGPUR** : 2nd Floor, Saral Court, Opp. Yashwantrao Stadium, Chantol, Nagpur-440 012.
Tel: 0712-2440018, 2440019 Fax: 0712-2420102
- NOIDA** : Unit No. 432 - 434, 4th Floor, Block A, Pacific Business Park, Plot No. - 37/1, Site - IV, Sahibabad Industrial Area, Ghaziabad-201 010, Uttar Pradesh.
Tel: 0120-4040400 Fax: 0120-4040440 (near Kaushambi Metro Station)
- PATNA** : Kashi Place, Dak Bungalow Road, Patna - 800 001. Tel: 0692-2220188, 2228911
Fax: 0692-2221978
- PUNE** : Manoj Hall 2, General Thimmaya Road, Pune-411 001.
Tel: 020-26902000, 26982801 Fax: 020-26980523
- RAIPUR** : Bopal Bhawan, Drongal Colony, G.E. Road, Near Anupam Udyan, Raipur-492 001. Tel: 0771-2263968, 2263976, 4062166 Fax: 0771-2263310
- VISAKHAPATNAM** : D. No. 38-20-122, GF-2, Seemaa, APSEZ Colony, Buzhrajapuram, Visakhapatnam-530027 (A.P.)
Mob: 9008728995



**PRODUCTS SO STUNNING,
THEY DESERVE
BEAUTIFUL HOMES.**



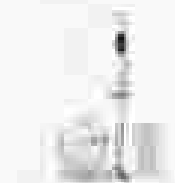
Ice Blend Support



Smart Cook More Cook



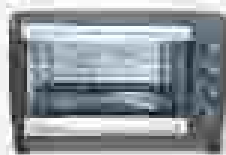
Fast Process



Fast Cook More Cook



Hot Water



TO



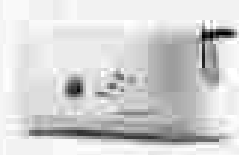
Micro Oven



Induction Cooker



Rice Cooker



Pressure Cooker



Electric Water



Electric Water



Electric Kettle



Steam Iron



Electric Heater

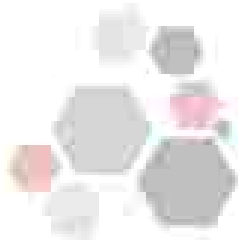
Murphy Richards' latest range of home appliances is crafted with contemporary designs and innovative technology that makes daily chores effortless. Utmost importance is given to every product in terms of styling and durability. So, the next time you wish to enhance the decor of your home, consider buying from Murphy Richards. Visit your nearest dealer today.

murphy richards
smart ideas for your home

murphyrichards.com | 022-41580000 | www.murphyrichardsindia.com

morphy richards

smart ideas for your home



Warranty

All Morphy Richards products have a 7 year warranty unless otherwise stated.

Bajaj Electricals Limited

301, Hindustani Aapna, Phase-3, Indokar, Yashwantrao Chavan
Off Eastern Express Highway, San East, Mumbai - 400 022.
Website: www.morphyrichardsindia.com
Email: support@morphyrichardsindia.com

REGISTERED OFFICE:

45/47, Warner Road, Mumbai - 400 011.



Due to continuous efforts to improvement, specifications are subject to change without prior notice.

All Morphy Richards appliances listed within conform to Indian voltage standards i.e. 230V AC, 50Hz.

MR/11/2016

morphyrichards.com 022-41280000 | www.morphyrichardsindia.com

customer support: consumercare@morphyrichardsindia.com